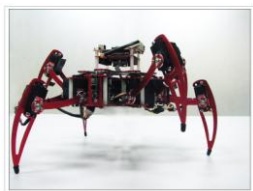
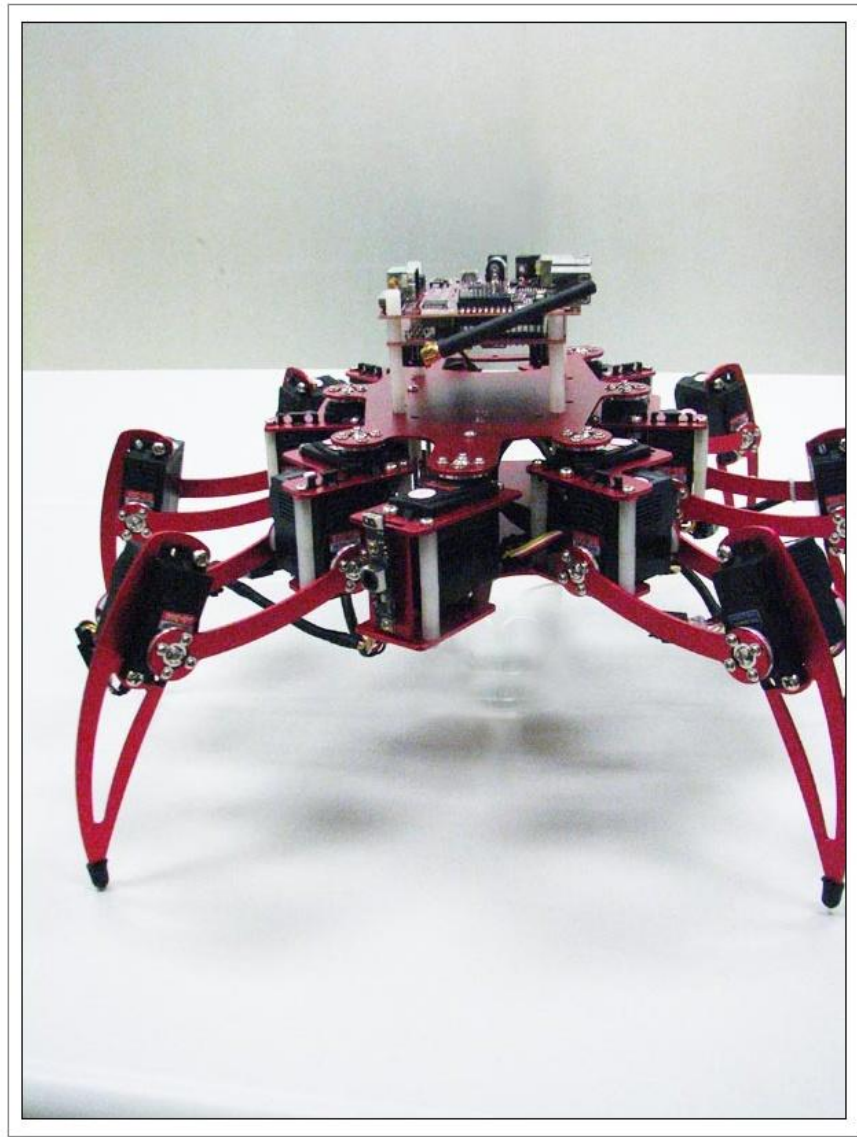


[CATCAN]



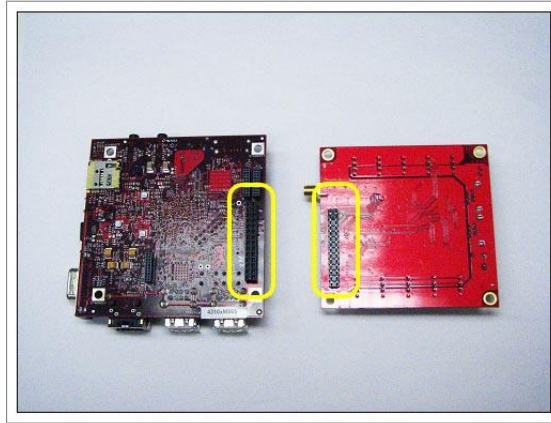
[CATCAN-HEXAPOD TOOL]

[USER GUIDE]

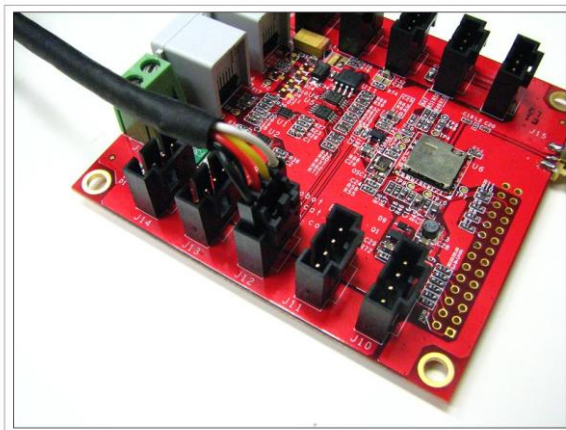


Setup BeagleBoard and RobotBoard

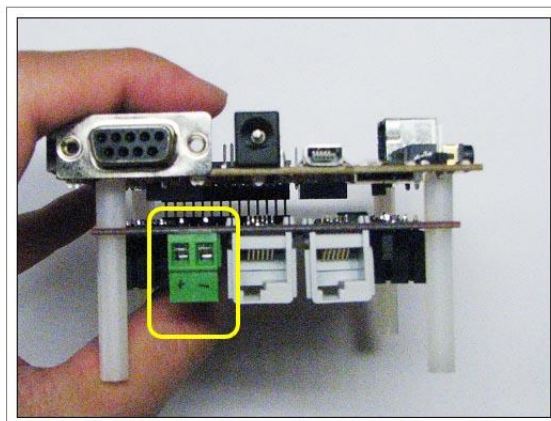
- 連接 BeagleBoard -xM 以及 RobotBoard



- 連接馬達與 Robot board，注意，訊號線要交換，白色線比黃色線更靠近外圍



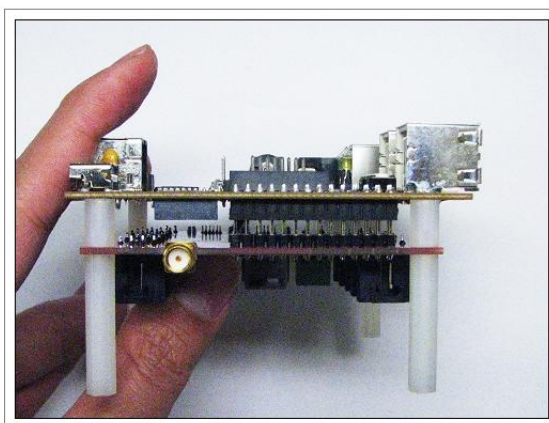
- RobotBoard 版本 2.2 版只須接上 12V 外部電源接頭(請注意 12V 正負極勿接反) Beagleboard 以及 Robot board 之間可斟酌加上塑膠銅柱保持機構穩定



- RobotBoard 版本 2.1 版需要再接 5V 接頭



- Beagleboard-xM 與 RobotBoard 之間排針連接示意。



- 連接馬達、12V 電源與 Micro USB 連接線即完成

